



We Build and Service the Whole Car

# T3260

# THRU SILL

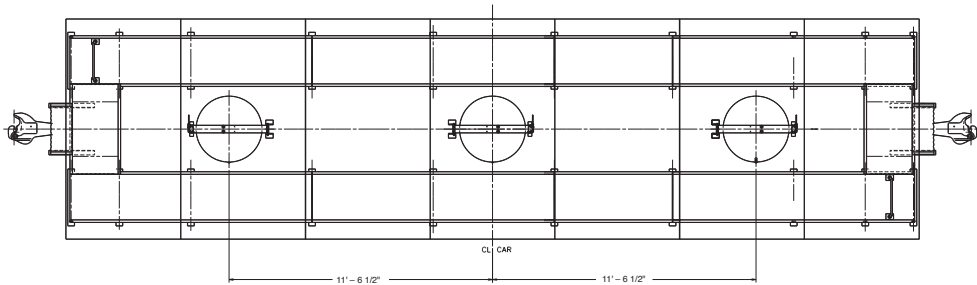


## T3260

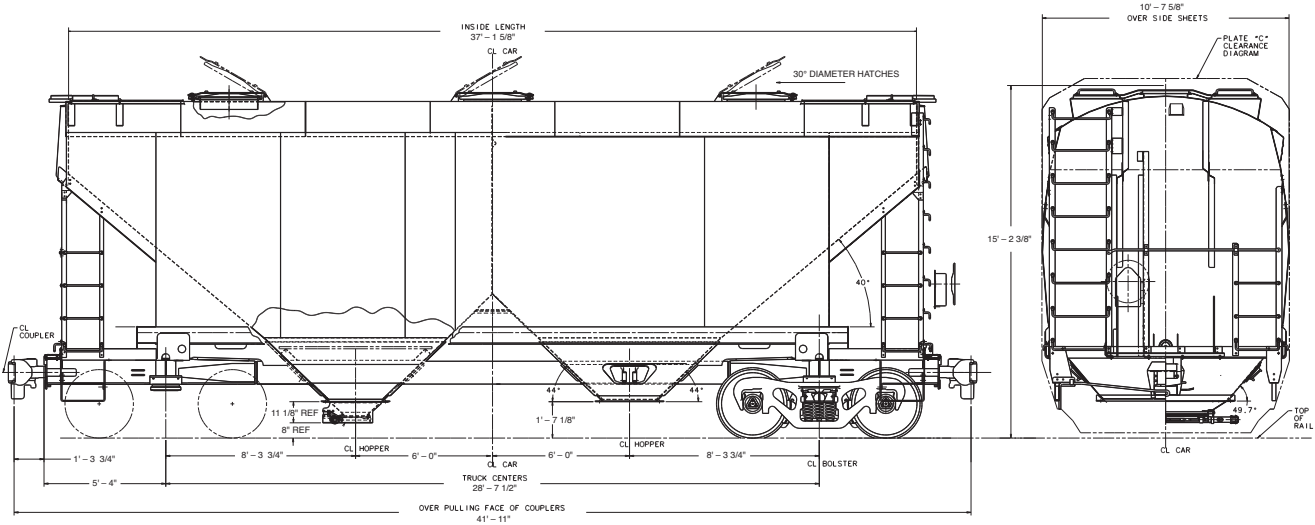
### *T3260 Thru Sill Covered Hopper Car*

The 3260 cu. ft. Thru Sill covered hopper car is specifically designed for dry bulk products. Ideally suited for cement and other high density, free flowing products, the 3260 cu. ft. Thru Sill car provides both the shipper and receiver with the highest quality covered hopper car in the industry.

Since the introduction of the Thru Sill car, it has evolved to accommodate the wide range of products that exists today. Improvements to the car's shape, joint designs, outlet mounting frame, hatches and outlets provide optimum protection for today's dry bulk products and enhance the associated loading, unloading and cleaning processes. A variety of loading hatches and discharge outlets can be applied to the car to suit your specific needs.



## General Arrangement



### SPECIFICATIONS

|  |                      |
|--|----------------------|
| Cubic Capacity   | 3260 ft <sup>3</sup> |
| Center of Gravity from Rail  |                      |
| Empty  | 56.5"                |
| Loaded   | 98"                  |
| Horizontal Curve Negotiability, Uncoupled<br>(Minimum Radius of Curvature) | 150'                 |
| Vertical Curve Negotiability, Uncoupled, Empty                             | 354'                 |
| Number of Discharge Openings   | 2                    |
| Length Over Strikers   | 39' 3-1/2"           |
| Length Over Coupler Pulling Face   | 41' 11"              |
| Extreme Height   | 15' 2-1/4"           |
| Extreme Width  | 10' 8"               |
| Estimated Light Weight   | 53,000 lbs           |
| Gross Rail Load  | 286,000 lbs          |
| Plate C Construction   |                      |

#### Available Loading Hatches

- 30" Diameter Hatches (3/car) - Fiberglass or Aluminum
- Continuous Hatch (1/car) - Fiberglass or Aluminum

#### Available Discharge Outlets for Standard 66-bolt Mounting Flange

- Gravity Outlets (2/car)
- Gravity-Pneumatic Outlets (2/car)

#### Standard Features

- Vibrator Brackets (2/hopper, 4/car)
- 2" Diameter Covered End Vents (1/hopper, 2/car)



**MANUFACTURING**  
**AMERICAN RAILCAR INDUSTRIES, INC.**

100 Clark Street, St. Charles, Missouri 63301

(636) 940-6020 • (636) 940-6100 FAX

e-mail: [sales@americanrailcar.com](mailto:sales@americanrailcar.com) / website: [www.americanrailcar.com](http://www.americanrailcar.com)

**WE BUILD AND SERVICE THE WHOLE CAR**