



T4250 THRU-SILL COVERED HOPPER for POTASH SERVICE

GENERAL INFORMATION

VOLUME-----	4250 cu. ft
NO. OF COMPARTMENTS -----	3
LENGTH OVER PULLING FACE -----	50'- 1/4"
TRUCK CENTERS -----	36'-8 3/4"
HEIGHT (RAIL TO TOP OF HATCH)-----	15'- 4 11/16"
EXTREME WIDTH OUTSIDE -----	10'- 8"
HEIGHT-RAIL TO EXTREME WIDTH -----	8' - 4 1/2"
WIDTH-UPPER EAVES (RUNNING BOARDS)-----	8'-0"
HEIGHT-RAIL TO UPPER EAVES-----	15'
CLEARANCE DIAGRAM-----	C
CENTER OF GRAVITY- EMPTY -----	61.2"
CENTER OF GRAVITY-LOADED -----	97.4"
CARBODY WEIGHT EST. -----	37,200#
TOTAL WEIGHT CAR EST.-----	57,200#

NEGOTIABILITY:

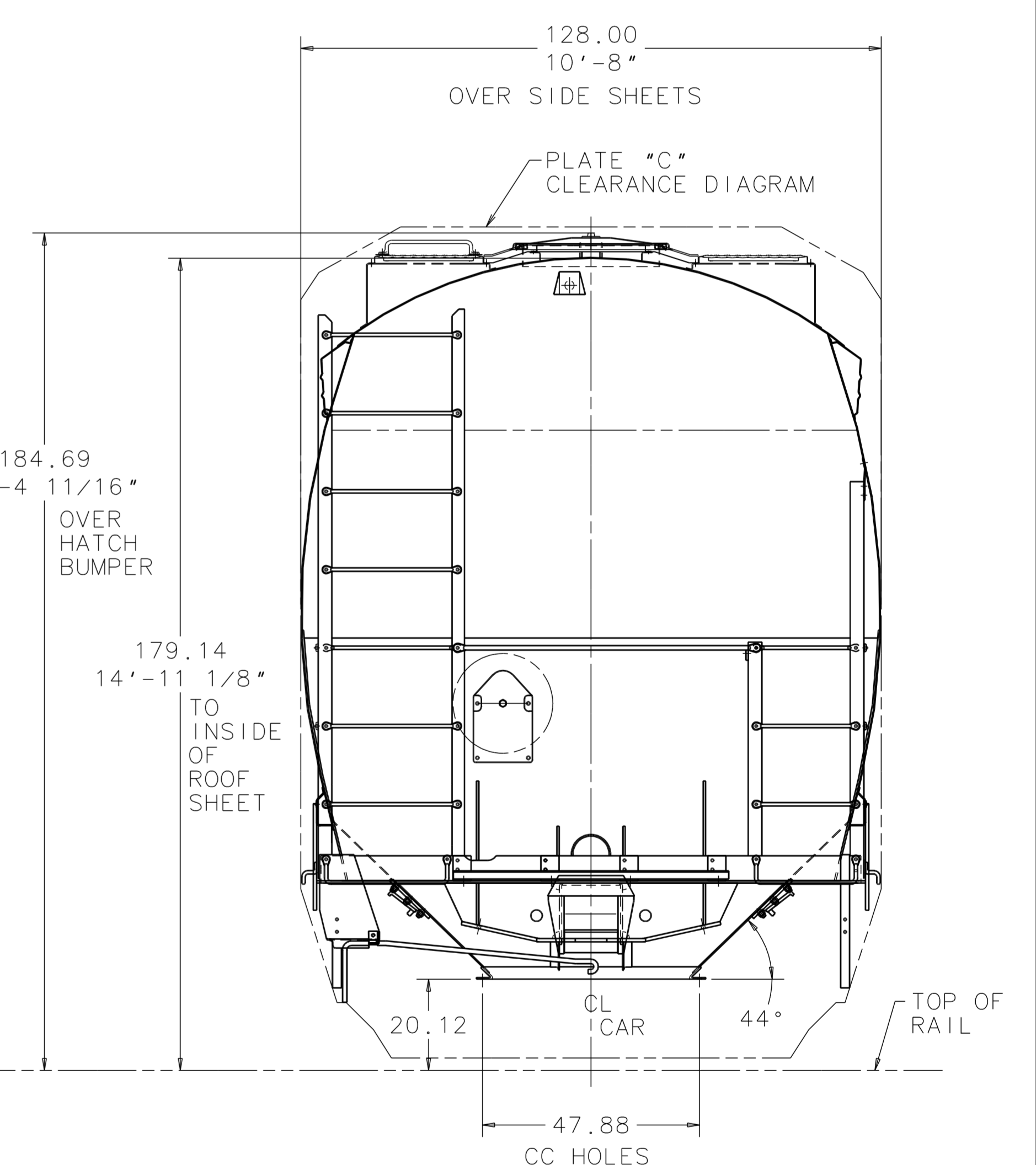
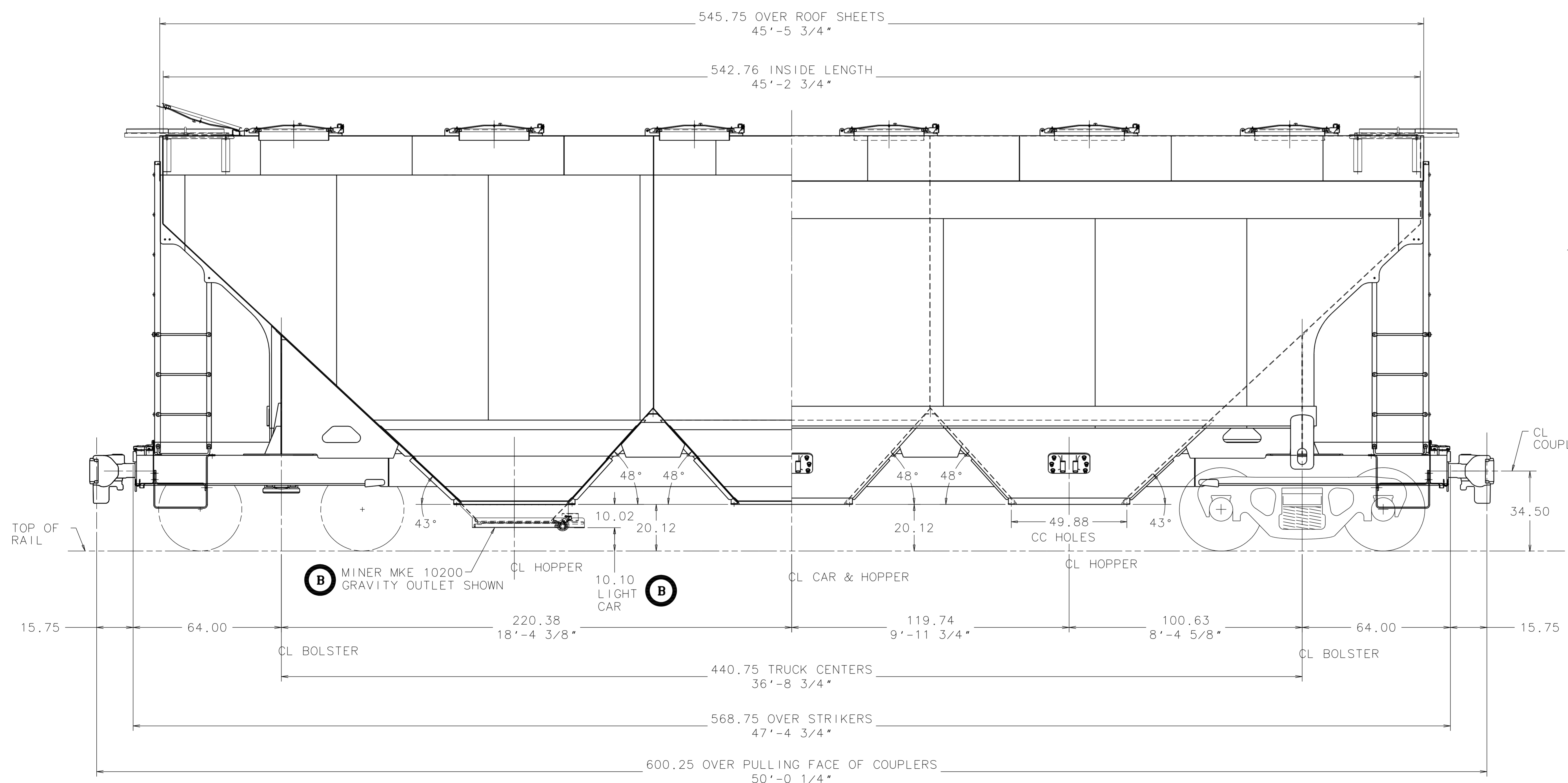
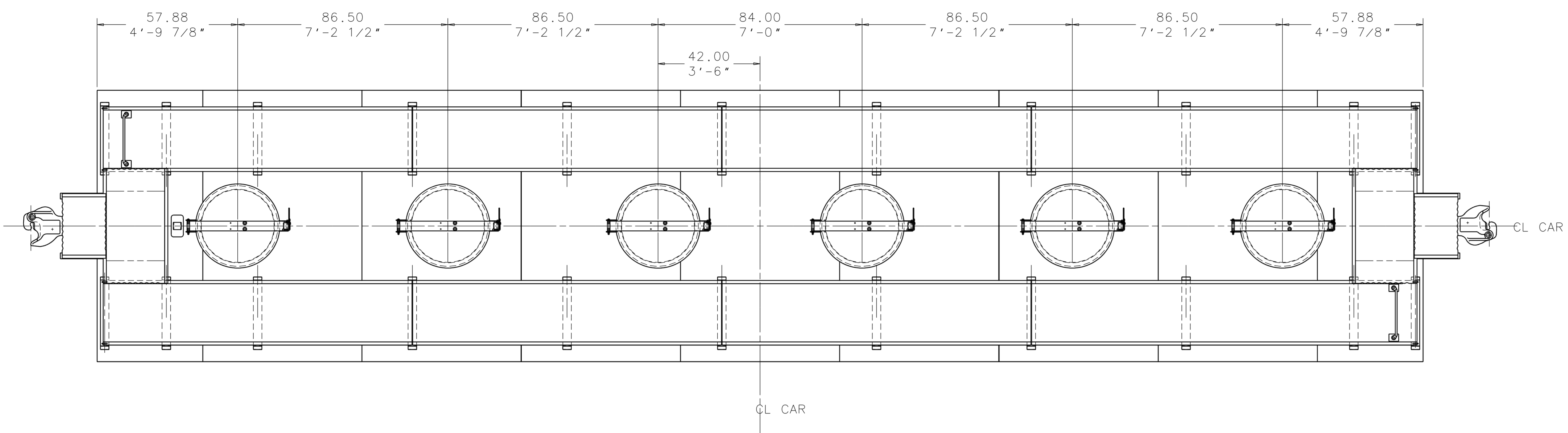
HORIZ. CURVE UNCOUPLED -----	150 ft.
HORIZ. CURVE COUPLED LIKE CAR -----	175 ft.
HORIZ. CURVE COUPLED TO AAR BASE CAR -----	177 ft.
VERT. CURVE UNCOUPLED -----	500 ft.
VERT. CURVE COUPLED TO AAR BASE CAR -----	634 ft.
SLOPE-TRANSVERSE SLOPE SHEET-----	48°
SLOPE-SIDE SLOPE SHEET -----	44°
SLOPE-END FLOOR SHEET -----	43°

REMARKS: Weight based on 286,000# GRL per AAR S-286. Trucks are M-976 preliminarily approved.

EQUIPMENT

HATCHES -----	(6) 30 inch round, fiberglass with Ireco latches
OUTLETS-----	(3) Miner MKE 10200, 30" x 30" gravity*
VIBRATOR ATTACHMENTS-----	(6) Casting, (2) per compartment - stud welded
RUNNING BOARDS/END PLATFORMS-----	ARI, Pre-galvanized G90
LIFT HOLES-----	4" x 7" holes located at bolster centerline
VENTS -----	(2) 2" end vents with rain covers, one on each end
DRAFT GEAR -----	AAR M901E, Miner TF-880
CENTER PLATE -----	Grade "B" 16" dia. low profile forged
STRIKER-----	Fabricated
REAR LUGS -----	Fabricated
COUPLER -----	SBE60EE, bottom shelf
YOKE -----	SY40AE Gr. "E"
COUPLER CARRIER WEAR PLATES-----	Manganese
AEI TAGS-----	(2) per car
ROPING STAPLES-----	(4) Reinforced 3/4" plate with 4" cutout
JACKING PAD -----	(4) 5" X 5" area under side sill

REMARKS: * Applied with 66 bolts and a bead of butyl caulk along bolt centers



NOTICE:
THIS DRAWING AND THE INFORMATION CONTAINED THEREIN ARE CONFIDENTIAL AND THE PROPERTY OF ARI. NO USE OR DISCLOSURE OF THE DRAWING OR INFORMATION CONTAINED THEREIN SHALL BE MADE WITHOUT PRIOR WRITTEN CONSENT OF ARI INDUSTRIES.

STANDARD ARI CAR SHOWN - ACTUAL CAR MAY VARY FROM ILLUSTRATED FEATURES

REV	DATE	DR	CK	DESCRIPTION	EST	WT
B	6-30-09	GWO	RAD	ADDED MINER OUTLET WITH DIMENSIONS		
A				ORIGINAL ISSUE		

MATERIAL		UNLESS OTHERWISE NOTED ALL DIMS. ARE IN INCHES	CODE NO
FORMING CODE			LOT NO
TOL UNLESS NOTED		American Railcar Industries SALES ARRGT-T 4250 30 IN. HATCH DWG NO. S5-Y-2380 SCALE 3/64 SHEET	SIZE E
DEC +/-			
FRAC +/-			
ANG +/-			
DRAFTER	GWO 6-24-09		
CHECKER	---		
GROUP LDR	---		
APPL ENGR	---		
STR ENGR	---		
PROJ ENGR	RAD 6-25-09		



T4250 THRU-SILL COVERED HOPPER for POTASH SERVICE

CAR DESCRIPTION

BODY MATERIAL

SIDE SHEET	.174 min. 50,000 yield
SIDE SLOPE SHEET	.240 min. 50,000 yield
ROOF SHEET	.174 min. 50,000 yield
END FLOOR SHEET	.178 & .209 min. 50,000 yield
INTERIOR BULKHEADS	.178 min. 50,000 yield w/ vertical stiffeners
INTERIOR FLOOR SHEET	.178 min. 50,000 yield
OUTLET MOUNT. FRAME	3 1/2" x 3 1/2" x 3/8 ASTM A-36

UNDERFRAME MATERIAL

CENTER SILL	Fabricated 1/2" ASTM A-572 Gr. 50 Ty. 2
SHEAR PLATE	1/2" ASTM A-572 Gr. 50 Ty. 2
END SILL	6" x 3 1/2" x 3/8" A-36 angles
BOLSTER BOTTOM COVER	3/4" ASTM A-572 Gr. 65 Ty. 2
UPPER BOLSTER WEB	3/8" ASTM A-572 Gr. 50 Ty. 2
LOWER BOLSTER WEB	1/2" ASTM A-572 Gr.50
DRAFT SILL	Fabricated

BRAKE

BRAKE	Body mounting, AB 10" x 12" w/ end sheet mounted NYAB empty load equipment
AB VALVE	DB-60, aluminum
HAND BRAKE	Vert. wheel Ty. 1993 w/#66 bellcrank
SLACK ADJUSTER	Automatic-double jaw

TRUCKS

TYPE	286,000# capacity, Barber S-2-HD Split Wedge Design
WEIGHT	20,000#
SPRING GROUPING	(7) D5 outer, (7) D5 inner
AXLE	AAR M-101 Gr. "F", 6 1/2 x 9
ROLLER BEARING	Heavy Duty 6 1/2 x 9, NFL type
SIDE FRAME	AAR M-201 Gr. "B +"
BOLSTER	AAR M-201 Gr. "B+ " 16" bowl,
BOLSTER WEAR LINERS	Vertical: metallic -welded, Horizontal manganese -loose
ROLLER BEARING RETAINER KEY	None
SIDE BEARING	Long travel metal capped constant contact, Miner TCC-III-60-LT
WHEEL TYPE	36" dia. Class "C", 1 wear
BRAKE SHOE	AAR H4 2" composition
BRAKE BEAMS	AAR #24 unit type
CENTER PLATE LUBRICANT	Lube patties
ROLLER BEARING ADAPTER	6 1/2" x 9" narrow pedestal w/ elastomeric pads
BRAKE BEAM WEAR PLATES	steel
REMARKS:	Column wear plates bolted only.

PAINT & LINING

INTERIOR PREP.	Abrasive blast or mechanically clean welds for inspection
EXTERIOR PREP.	Abrasive blast to Commercial, grade SP-6
INTERIOR LINING	None
EXTERIOR PAINT	Carbogaurd 876 HS DTM gray epoxy, 4-8 mils DFT minimum
ANTI-SKID	ARI anti-slip
STENCILING	AAR markings only with horizontal yellow delineators