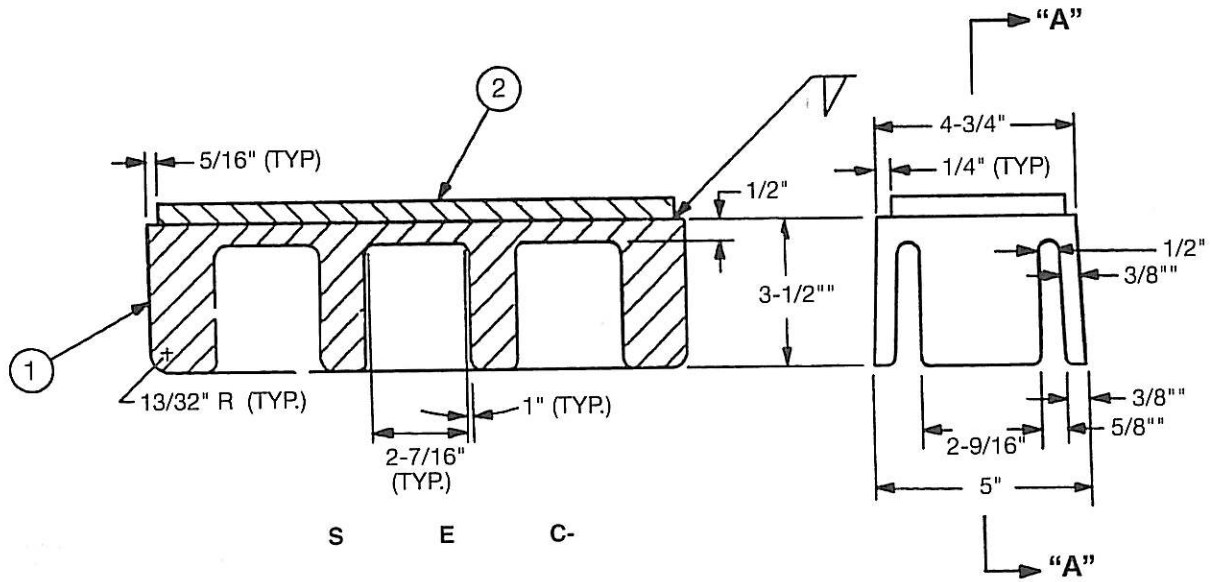


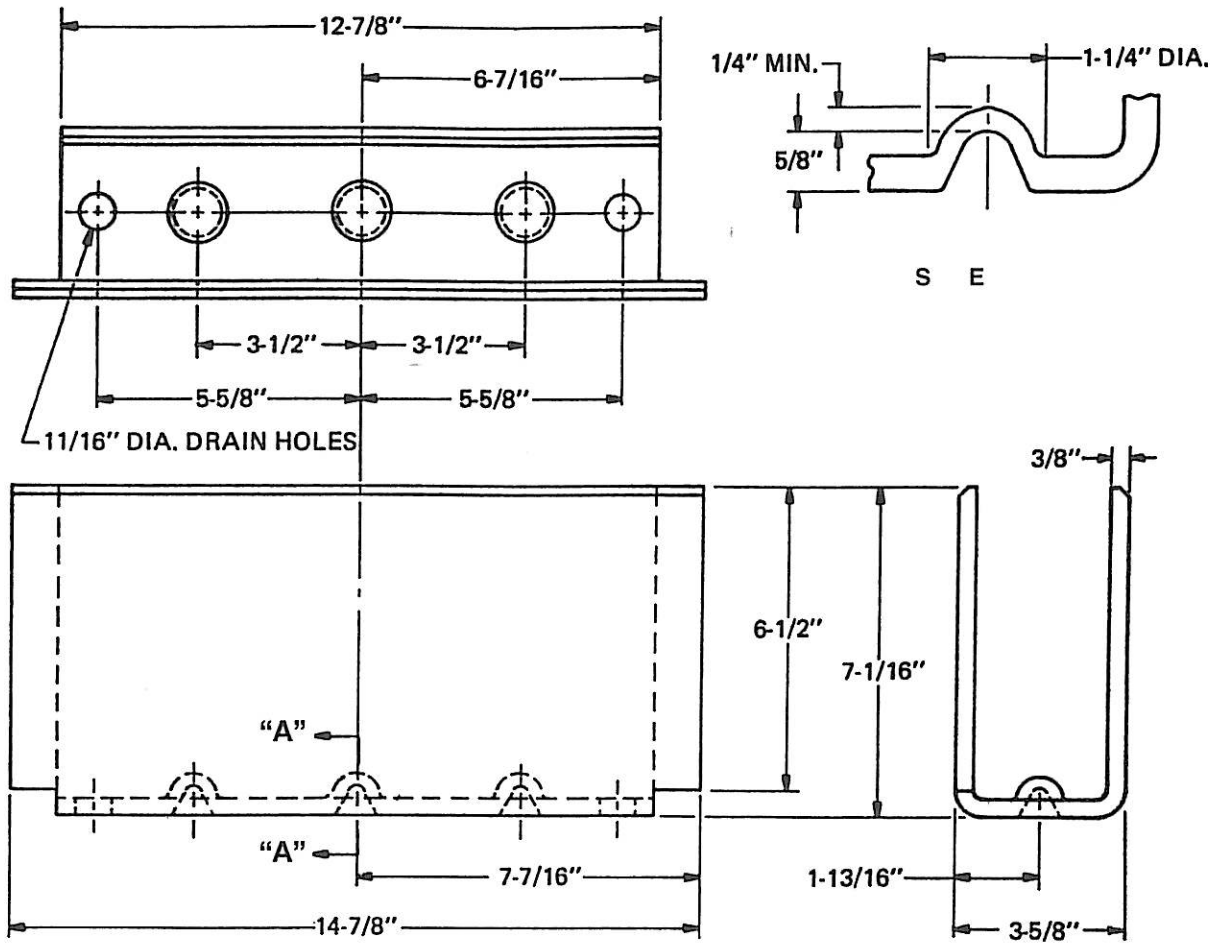
COUPLER CARRIER	MATERIAL	WEIGHT
DWG. 11-78470 Stock Part 50097347	ASTM A-36	14.5 lbs.

Variations on dimensions and configurations available to meet your requirements. Specify or furnish sketch.



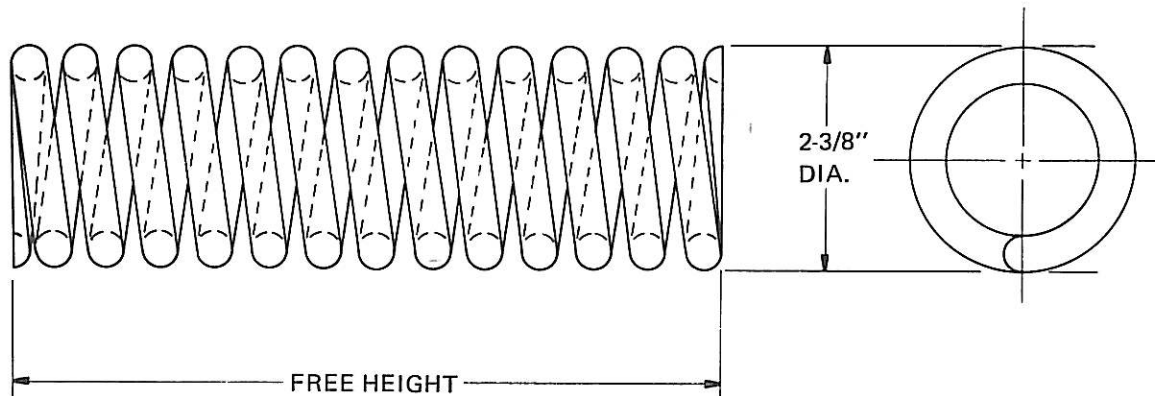
COUPLER CARRIER—TOP	MATERIAL	WEIGHT
DWG. 2-L-0520 Stock Part 56701015	USS 10 B 21 Q Temp. Brinell Hardness 269-341	15 lbs.

Designed for use on cars with Type F coupler. See opposite page for the bottom.



COUPLER CARRIER— BOTTOM	MATERIAL	WEIGHT
DWG. 1-D-1367 Stock Part 50092533	ASTM A-572 Gr. 50 Type 2	24 lbs.

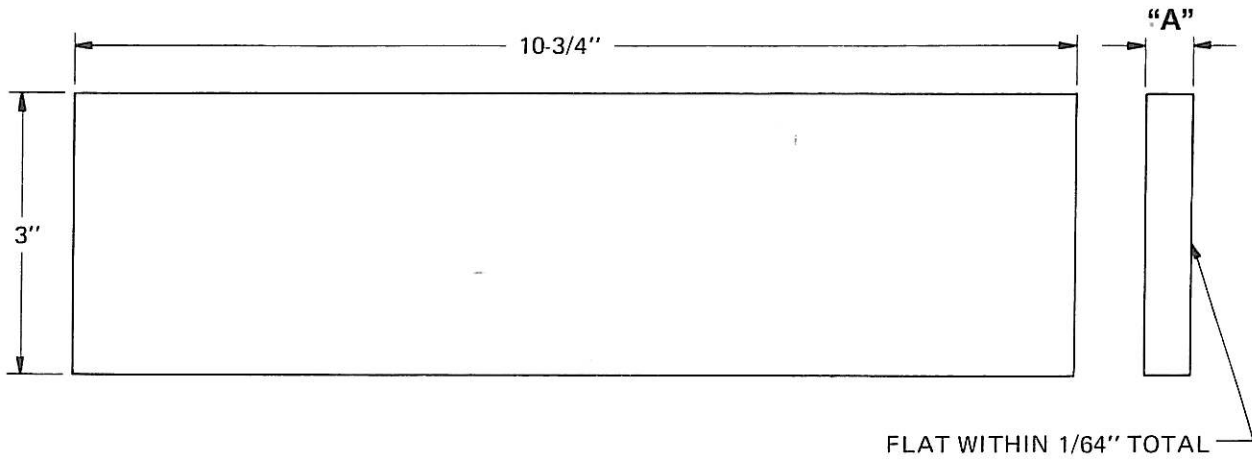
Designed for use on cars with Type F coupler. See opposite page for the top.



FREE HEIGHT - 10-5/16"  
SPRING LOAD AT - 8-7/8" - 375 LBS. ± 35 LBS.  
SOLID HEIGHT - 5-5/8"  
DIA. OF BAR - 3/8"

COUPLER CARRIER SPRING	MATERIAL	WEIGHT
DWG. 21-65367 Stock Part 57306024	AISI C-1065 Oil Tempered Spring Steel	3 lbs.

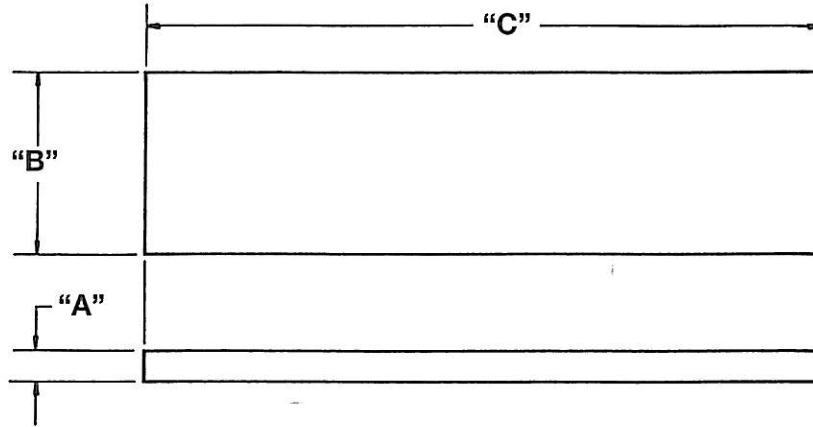
*Note that the free height of this spring is 10-5/16" and replaces springs with a free height of 9-5/16" and 9-9/16" on flat cars using type F couplers.*



LINE	"A"
0	1/2"
1	3/8"
2	1/4"

COUPLER CARRIER WEAR PLATE	MATERIAL	WEIGHT
DWG. 1-D-2078	ASTM A-514 Gr. B Brinell Hardness 235-341	Line 0 4.6 lbs. Line 1 3.4 lbs. Line 2 2.3 lbs.

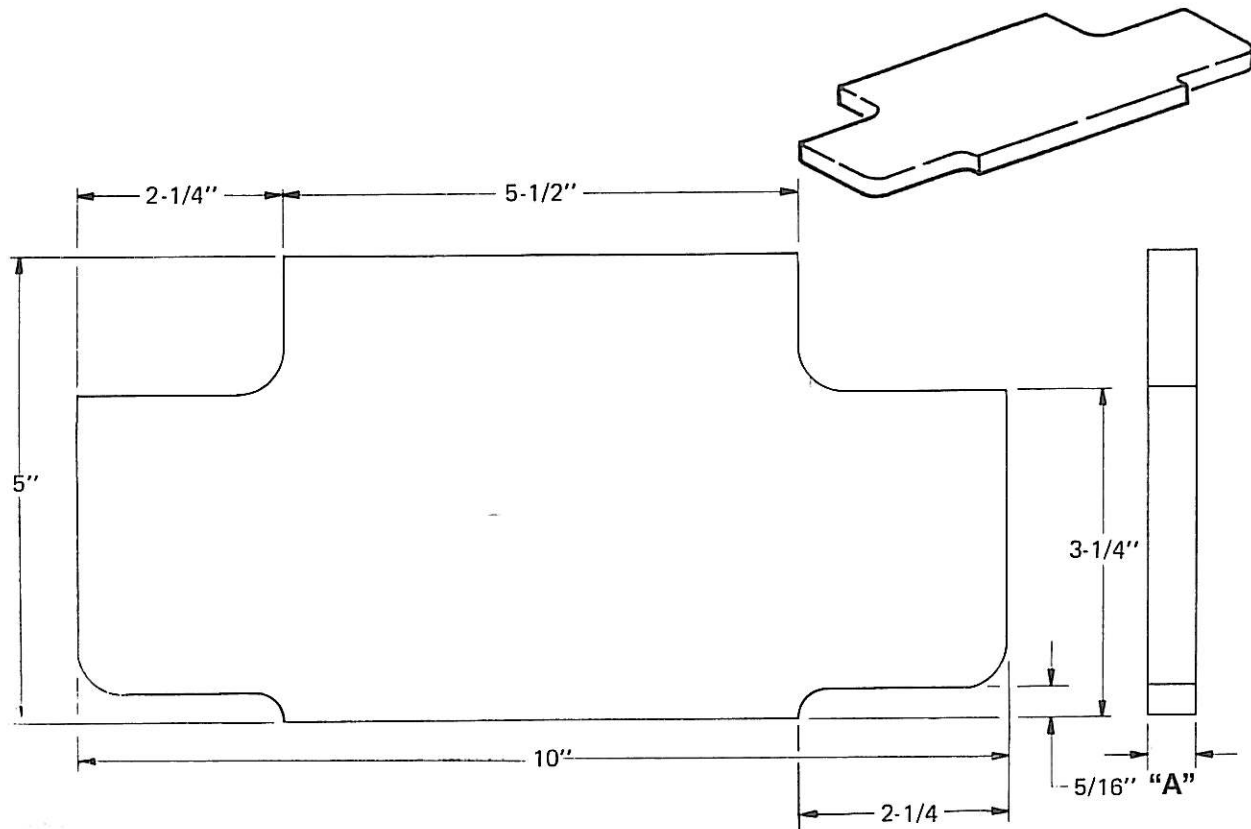
*Provides a simplified method of adjusting coupler height. Applied by welding.*



LINE	"A"	"B"	"C"	WT. (LBS.)	STOCK PART
0	1/4"	3 1/2"	8"	1.9	—
1	3/8"	3-1/2"	8"	2.9	—
2	1/2"	3-1/2"	8"	3.9	—
3	1/2"	3"	7"	2.9	6H187803
4	5/8"	3 1/2"	8"	4.9	—
5	1/4"	3"	7"	1.5	6H187805
6	3/8"	3"	7"	2.2	6H187806
7	5/8"	3"	7"	3.7	—
8	1/4"	3 1/2"	7 3/4"	1.9	—
9	3/8"	3 1/2"	7 3/4"	2.8	—
10	5/8"	3 1/2"	7 3/4"	4.7	—
11	1/2"	3 1/2"	7 3/4"	3.7	—
12	1/2"	4"	8"	4.5	—
13	1/4"	5 1/2"	9"	3.5	—
14	1/4"	3"	9"	1.9	—

COUPLER CARRIER WEAR PLATE	MATERIAL	WEIGHT
DWG. 1-H-1878	ASTM A-514 Gr. B 235-341 BHN	See Table

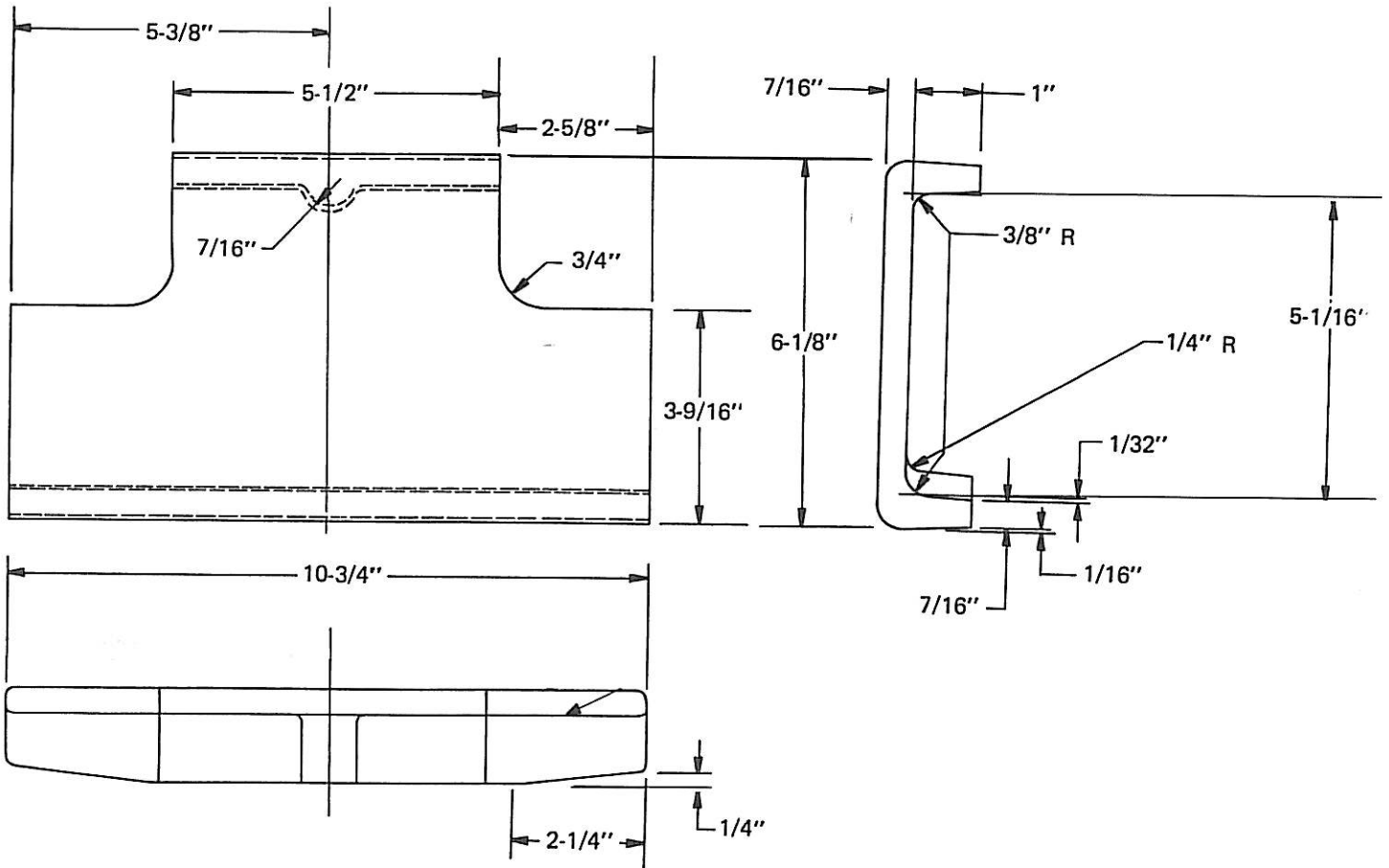
Provides a simplified method of adjusting coupler height. Applied by welding.



LINE	"A"	WT. (LBS.)	STOCK PART
0	1/2"	6.1	50094763
1	3/8"	4.6	50094764
2	1/4"	3.1	50094765
3	5/8"	7.7	—

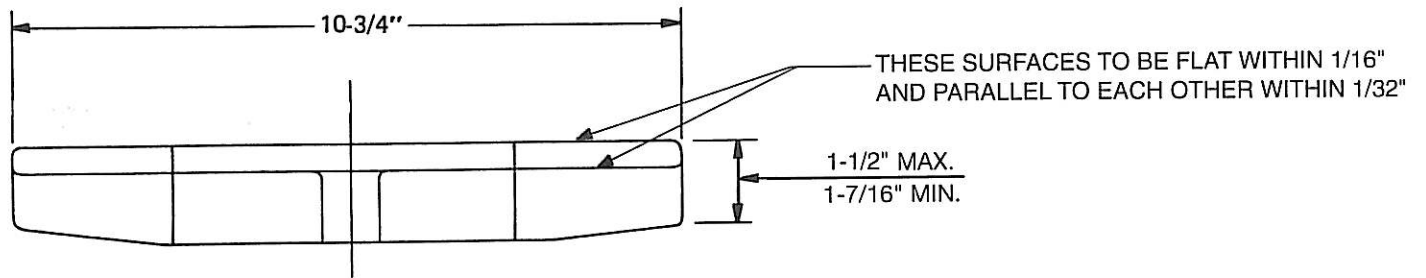
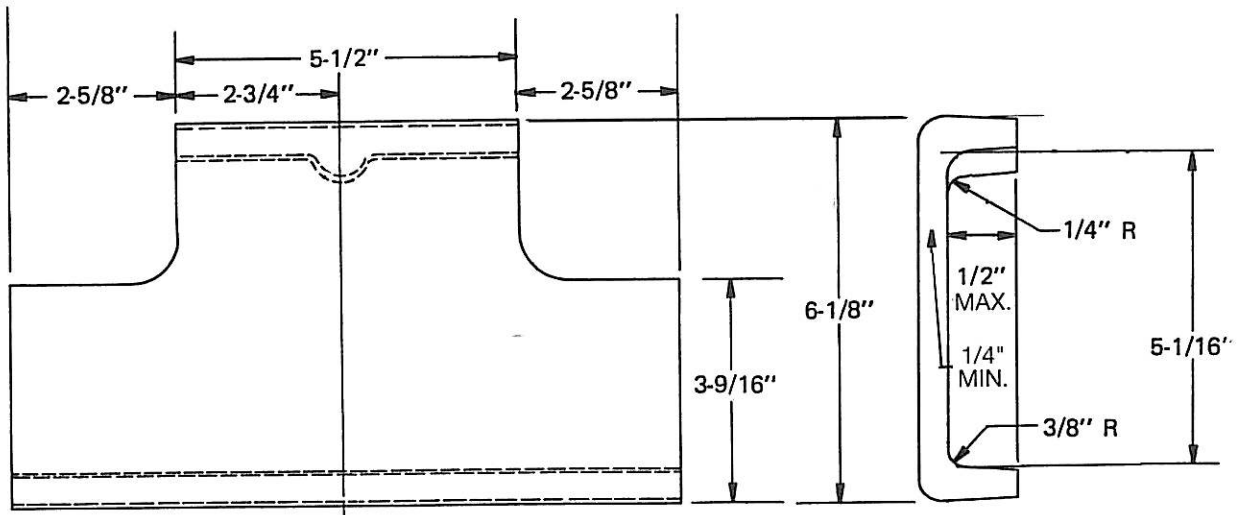
COUPLER CARRIER WEAR PLATE	MATERIAL	WEIGHT
DWG. 1-C-0270	ASTM A-514 Gr. B 235-341 BHN	See Table

*Provides a simplified method of adjusting coupler height. Applied by welding.*



COUPLER CARRIER WEAR PLATE	MATERIAL	WEIGHT
DWG. 2-H-2634 Stock Part 50094503	AISI C-1050 Quench and Temper 269-341 BHN	9.4 lbs.

*Provides a simplified method of adjusting coupler height. Applied by welding.*



COUPLER CARRIER WEAR PLATE	MATERIAL	WEIGHT
DWG. 2-J-9880-02 Stock Part 50092284	ASTM A-128 Gr. A Manganese Steel	9 lbs.

This part conforms with AAR standard S-269-92.  
Provides a simplified method of adjusting coupler height. Applied by welding.

THIS

PAGE

LEFT

INTENTIONALLY

BLANK