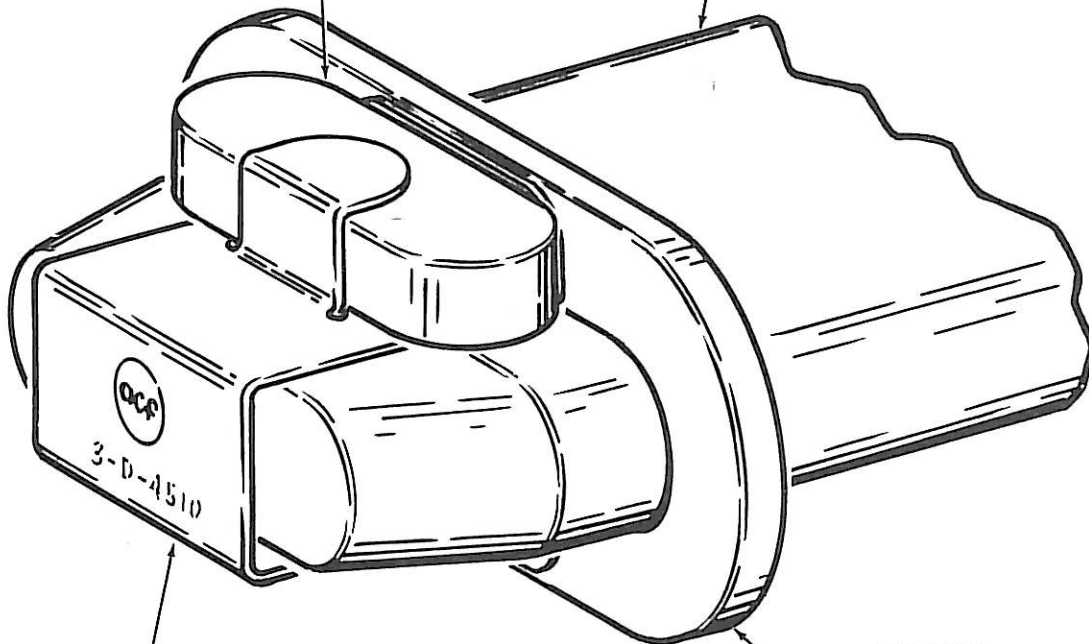




AAR STD. RETAINER
STOCK PART 57308013
REF. PAGE 38

AAR STD. DRAFT KEY
REF. PAGE 39 FOR LIST OF
STOCK DRAFT KEYS



AAR APPROVED DRAFT KEY RETAINER LOCK
STOCK PART 57308008 COVERED BY
U.S. PATENT NO. 3,673,914
REF. PAGE 37

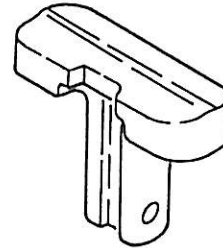
WASHER
AS REQUIRED BY RULE 88
OF THE FIELD MANUAL
OF AAR INTERCHANGE RULES.
STOCK PART 6A644300
REF. PAGE 41

DRAFT KEY LOCK RETAINER ASSEMBLY

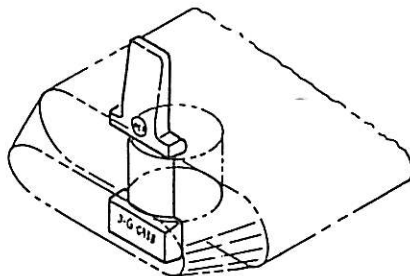
All component parts shown on this page are carried in stock for immediate delivery. You benefit from lower prices achieved through volume production, regardless of quantity ordered.



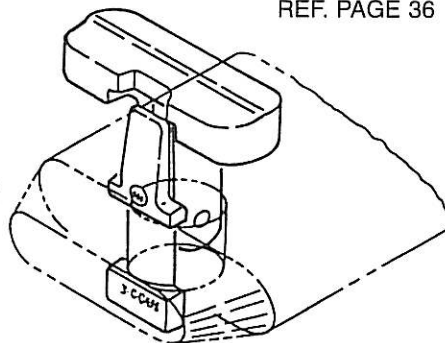
KEEPER
STOCK PART 50094157
REF. PAGE 35



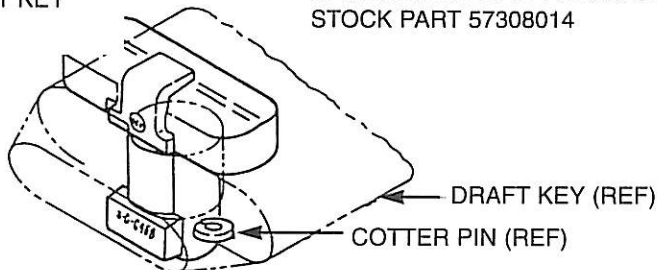
RETAINER
STOCK PART 57308014
REF. PAGE 36



1. INSERT KEEPER
STOCK PART 50094157
FROM TOP OF DRAFT KEY



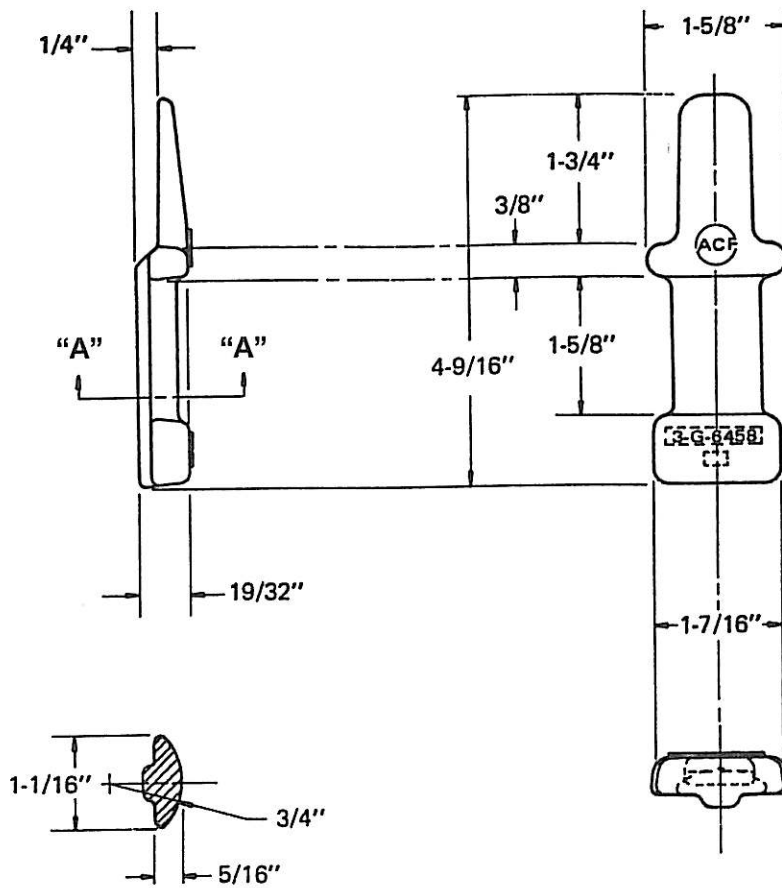
2. WITH KEEPER IN POSITION INSERT RETAINER,
STOCK PART 57308014



3. WITH KEEPER, STOCK PART NO. 50094157, AND RETAINER, STOCK PART NO. 57308014, IN POSITION, UPSTANDING PORTION MUST BE BENT AWAY FROM OUTER END OF DRAFT KEY TO COMPLETE APPLICATION

DRAFT KEY KEEPER RETAINER ASSEMBLY

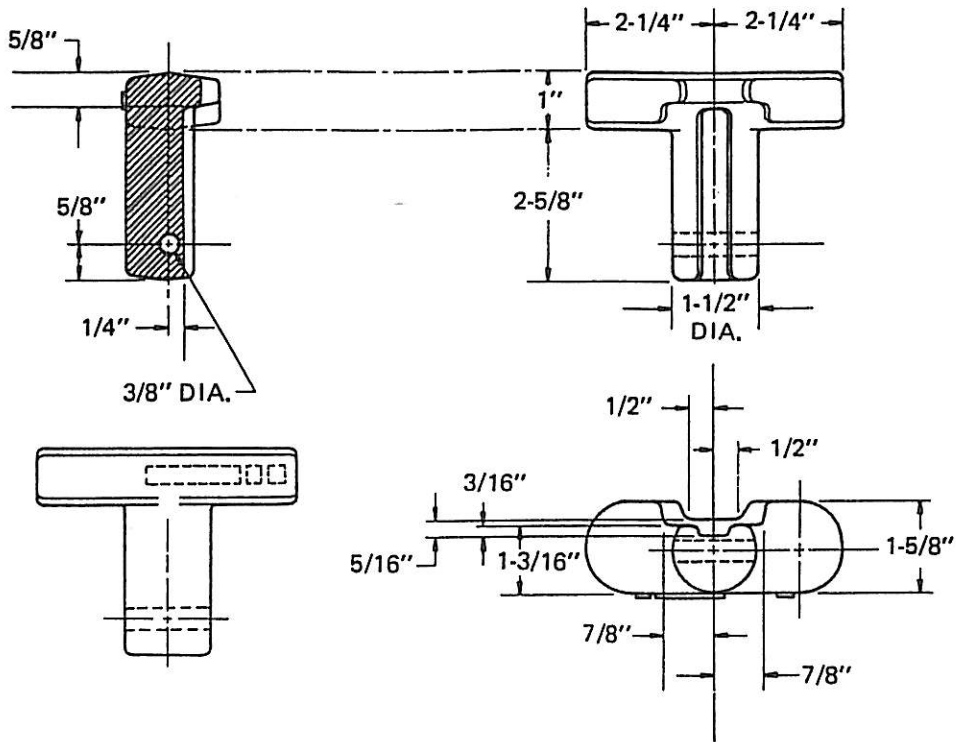
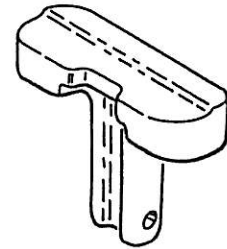
All component parts on this page are carried in stock for immediate delivery. You benefit from lower prices achieved through volume production, regardless of quantity ordered. AAR approved equivalent



SECTION A-A

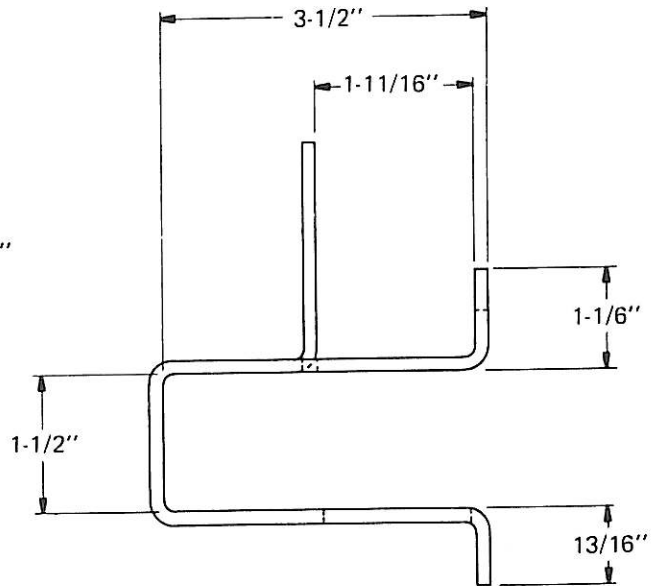
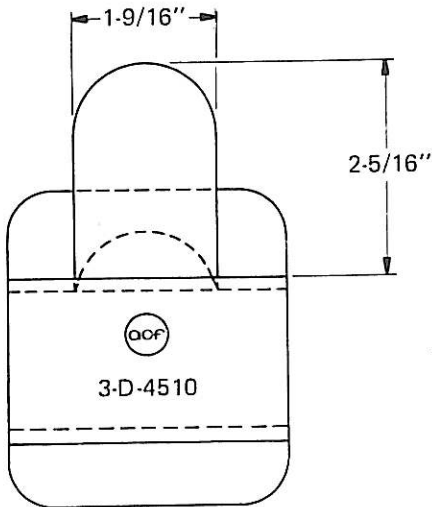
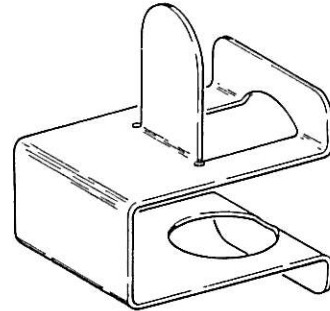
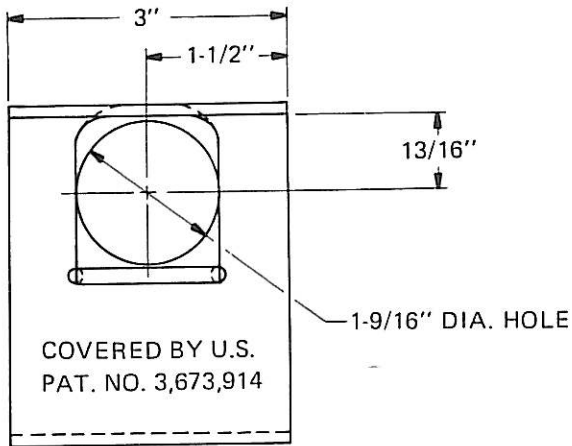
DRAFT KEY RETAINER KEEPER	WEIGHT
DWG. 3-G-6458 Stock Part 50094157	.4 lbs.

AAR approved equivalent



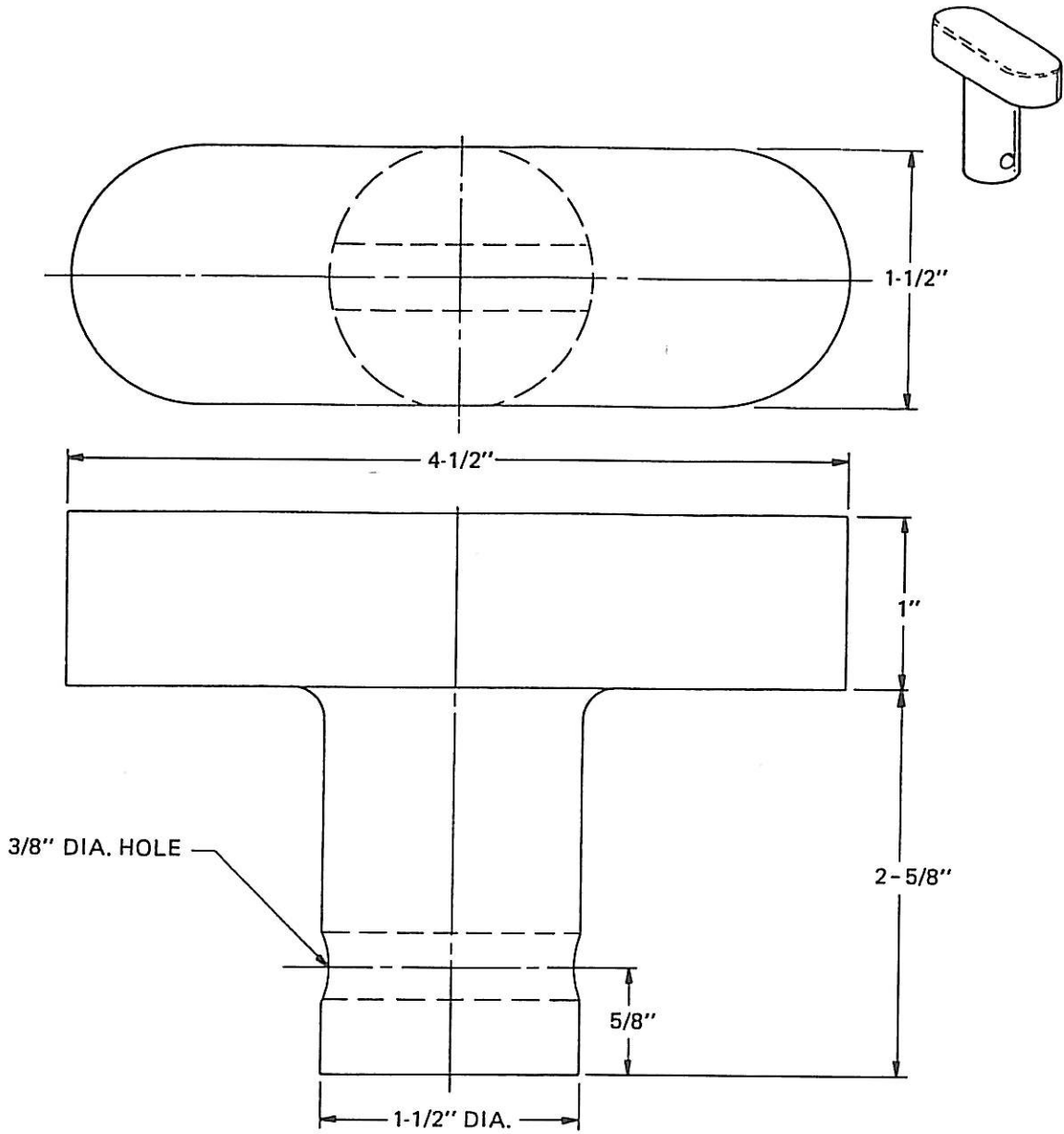
DRAFT KEY RETAINER	WEIGHT
DWG. 4-G-6459 Stock Part 57308014	2.5 lbs.

AAR approved alternate

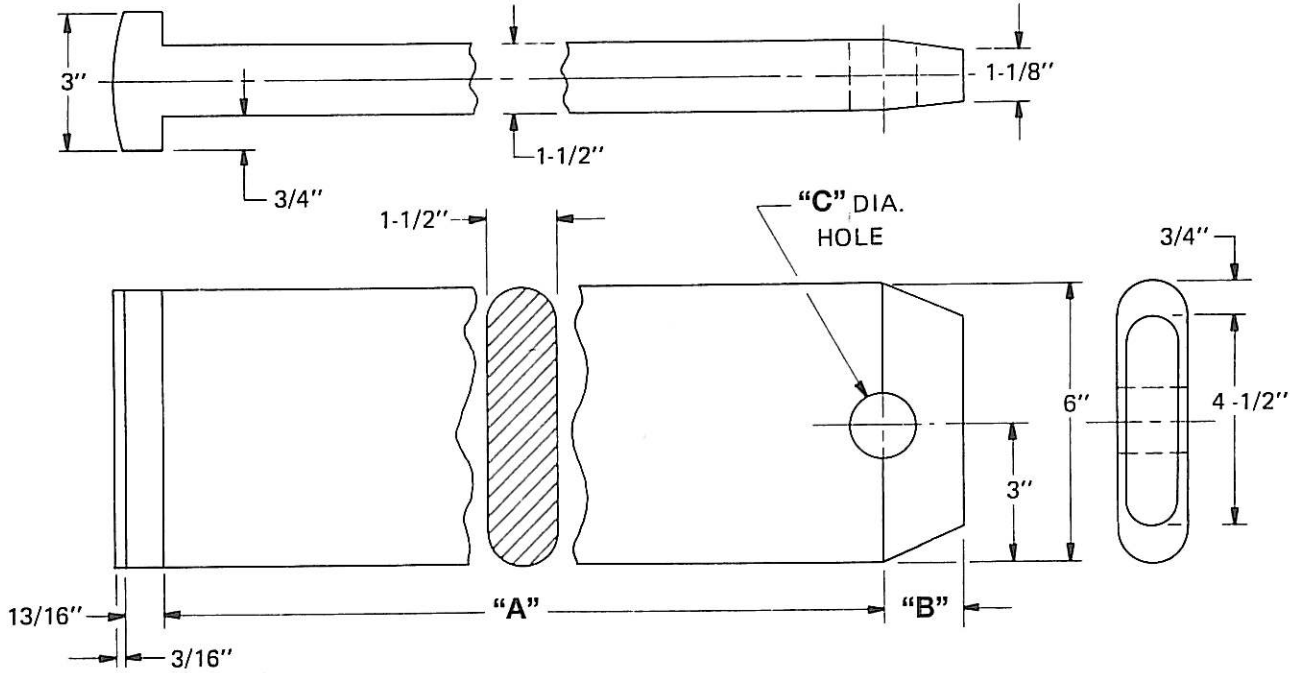


DRAFT KEY RETAINER LOCK	WEIGHT
DWG. 3-D-4510 Stock Part 57308008	0.8 lbs.

This AAR approved lock is designed for use with AAR standard draft key retainer and is applied with a minimum of effort. Covered by U.S. patent number 3,673,914.



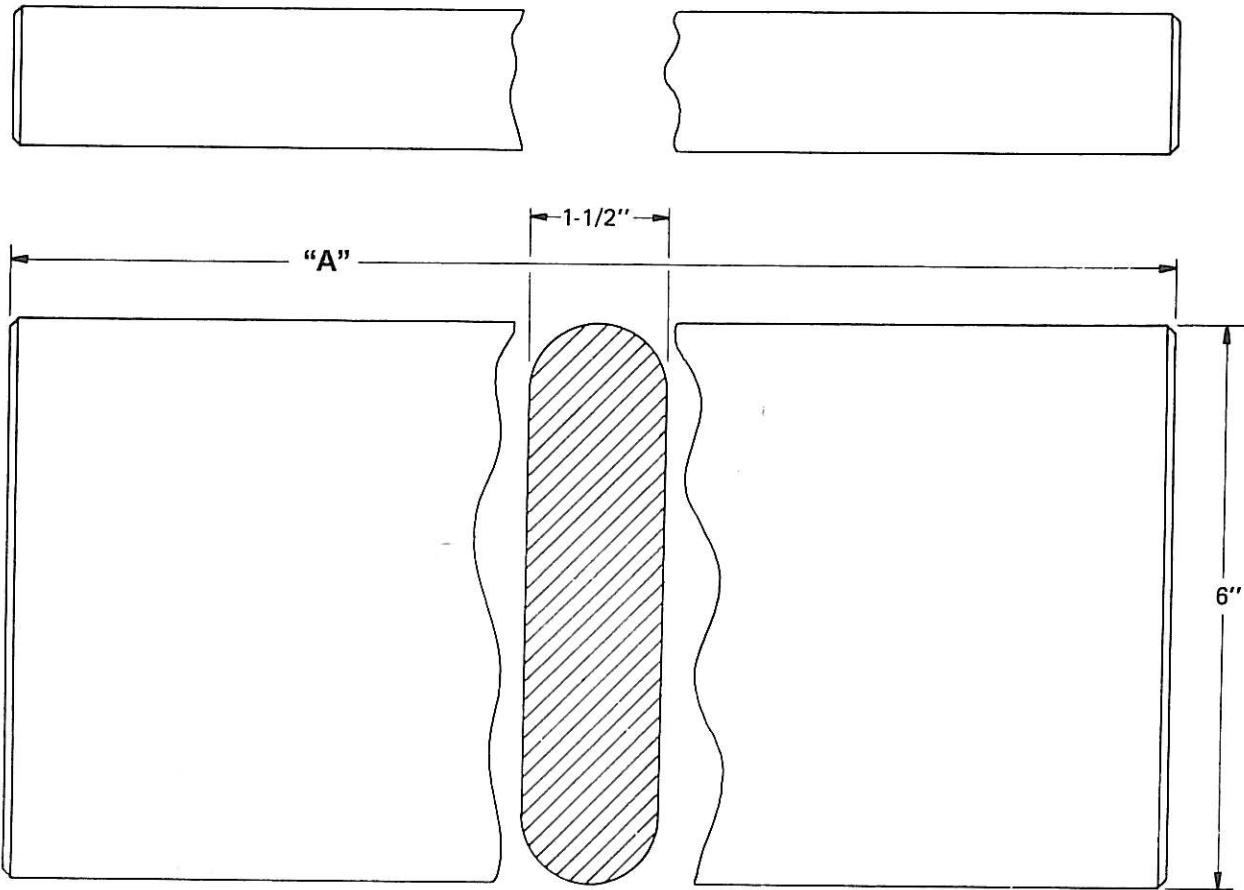
DRAFT KEY RETAINER	MATERIAL	WEIGHT
DWG. 11-80742-01 Stock Part 57308013	M-126 Gr. A	3 lbs.



"A"	"B"	"C"	STOCK PART HEAT TREATED	WT. (LBS.)	DRAWING HEAT TREATED	STOCK PART NON-HEAT TREATED	WT. (LBS.)	DRAWING NON-HEAT TREATED
16-1/2"	1-1/2"	1-9/16"	6H687803	48	3-H-6878-03	6D849549	48	3-D-8495-49
17"	1-1/2"	1-9/16"	6H687806	48	3-H-6878-06	6D849540	48	3-D-8495-40
17-1/2"	1-1/2"	1-9/16"	6H687801	50	3-H-6878-01	6D849551	50	3-D-8495-51
17-3/4"	1-1/2"	1-9/16"	6H687804	51	3-H-6878-04	6D849548	51	3-D-8495-48
18"	1-1/2"	1-9/16"	6H687800	52	3-H-6878-00	6D849532	52	3-D-8495-32
18-3/4"	1-1/2"	1-9/16"	6H687805	54	3-H-6878-05	6D849547	52	3-D-8495-47
19"	1-1/2"	1-9/16"	6H687807	55	3-H-6878-07	6D849546	55	3-D-8495-46
19-3/4"	1-1/2"	1-9/16"	6H687808	57	3-H-6878-08	6D849550	57	3-D-8495-50

DRAFT KEY	MATERIAL
DWG. (See Table) Stock Part (See Table)	ASTM A-576 Gr. 1050 Si .15-.30%

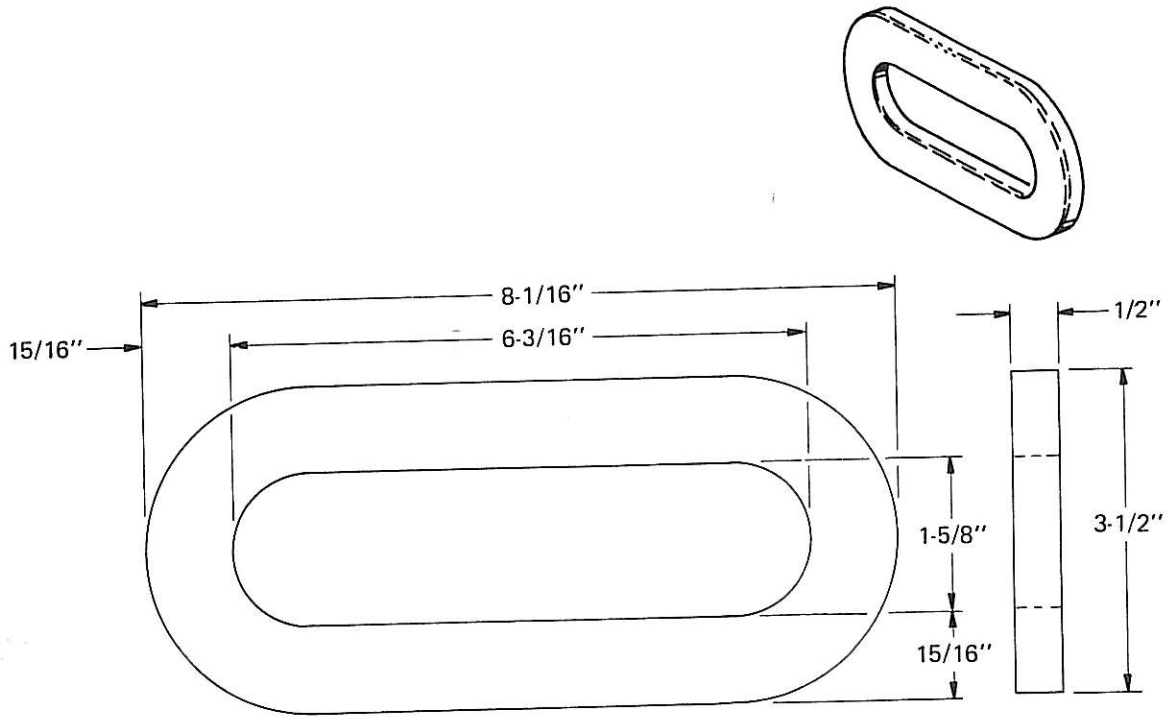
Additional variations in "A", "B" and "C" dimensions available to meet your requirements. All keys have 1-9/16" holes located 1-1/2" from the center of hole to the end of key.



LINE	"A"	WT. (LBS.)
1	12-1/2"	38
2	12-3/4"	39
3	17-1/2"	54
4	24"	73
5	26"	80
6	12-7/8"	40
7	12"	37
8	30"	105
9	18-1/4"	46.5
10	21-1/2"	54.8
11	19-3/4"	50.3
12	9-1/2"	24.2

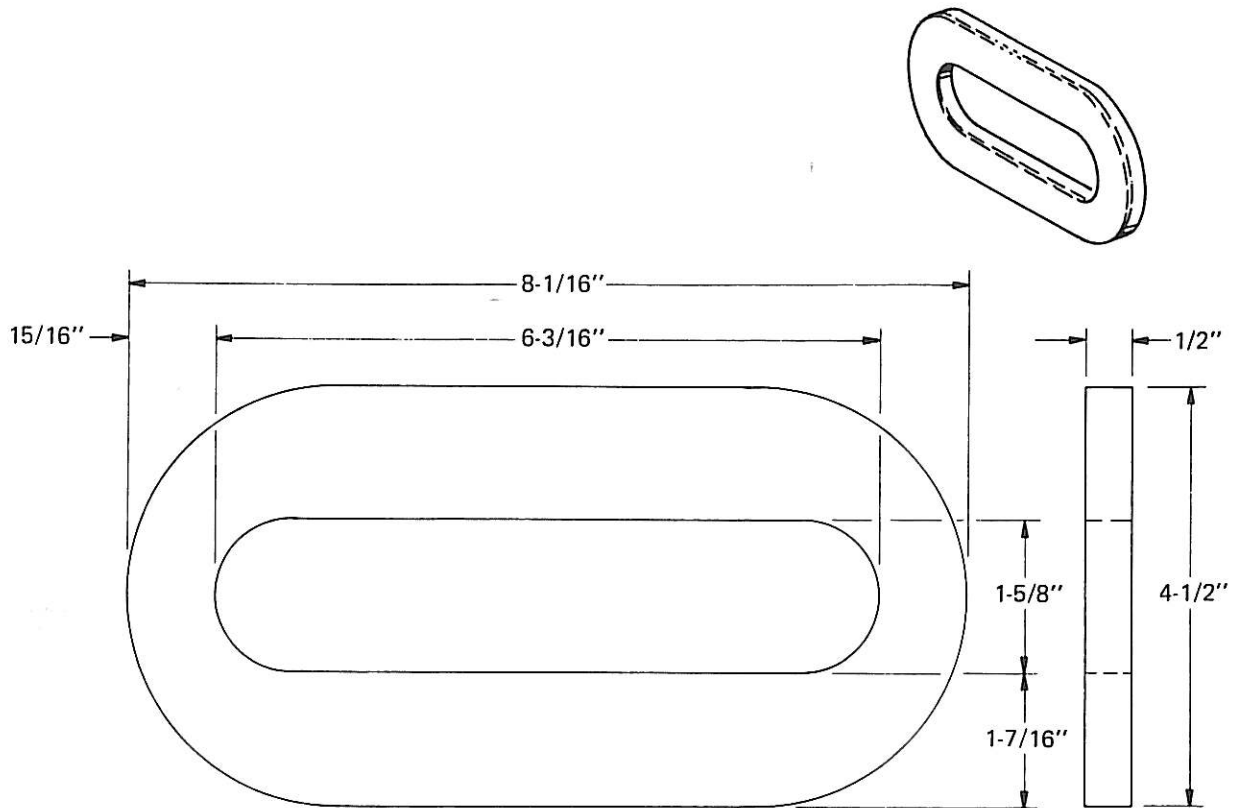
HEADLESS DRAFT KEY	MATERIAL	WEIGHT
DWG. 1-E-3828	ASTM A-576 Gr. 1050 Si .15-.30%	See Table

Used in conjunction with end-of-car cushioning. Variations in "A" dimension can be supplied to meet your requirements.



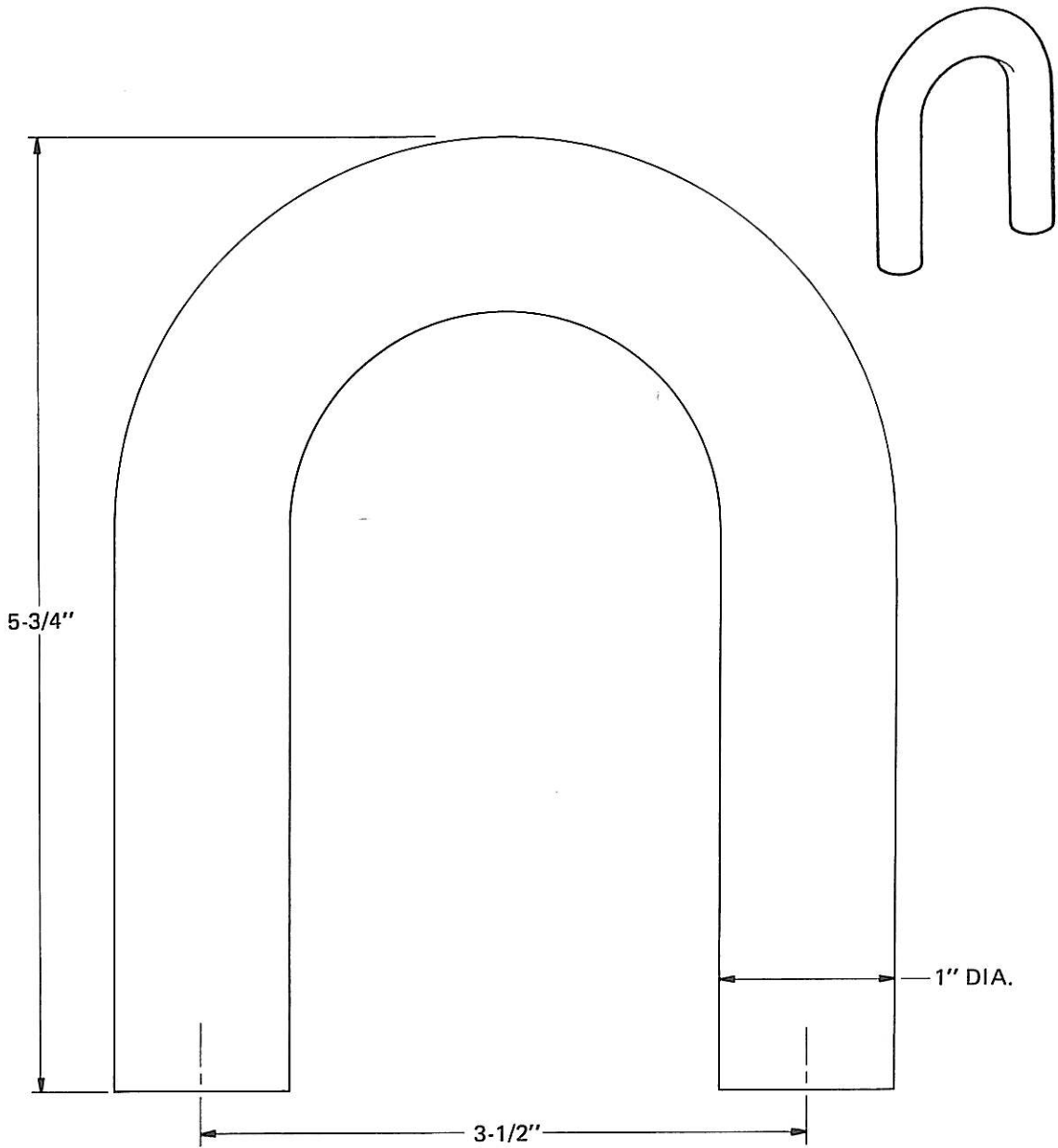
DRAFT KEY WASHER	WEIGHT
DWG. 1-A-6443 Stock Part 6A644300	2.5 lbs.

As of January 1, 1975, steel washer is to be used with standard or alternate standard draft keys on new and rebuilt cars, unless prohibited by striker and related design per the field manual of the AAR interchange rule 88.

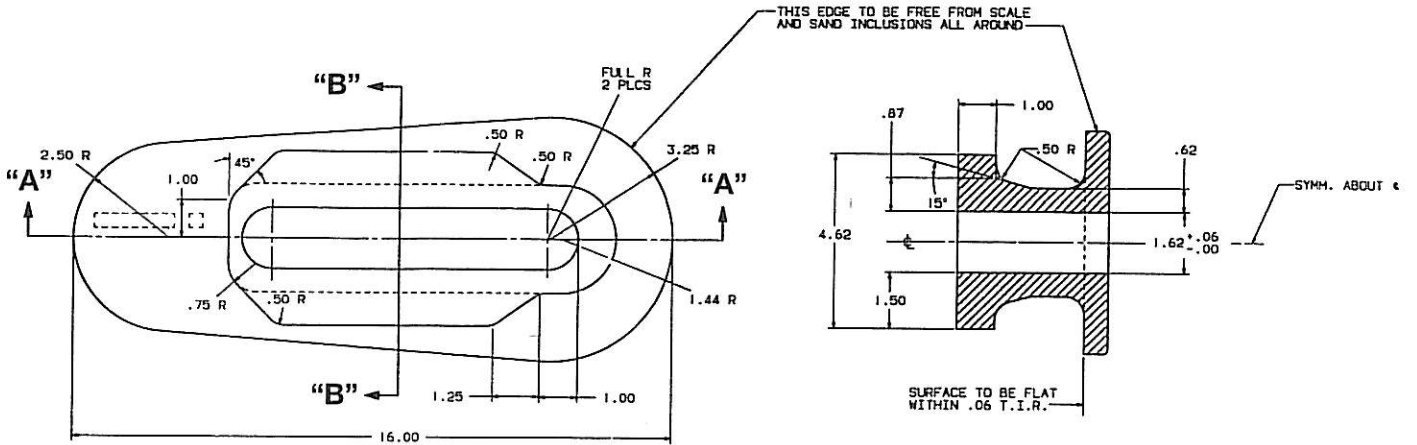


DRAFT KEY WASHER	WEIGHT
DWG. 1-E-2538 Stock Part 90004397	3.2 lbs.

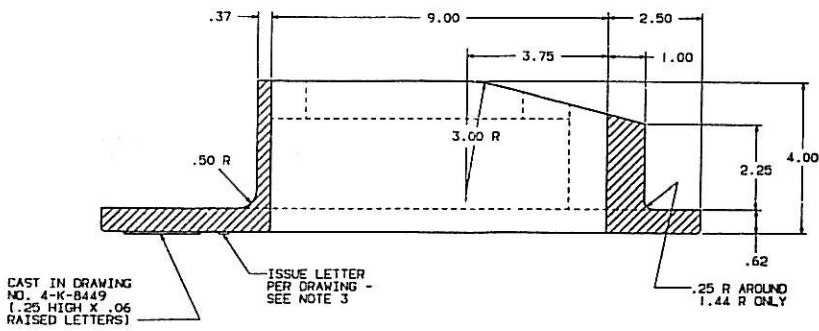
Modified washer for larger than normal draft key opening in center sill.



DRAFT KEY RETAINER	WEIGHT
DWG. 1-A-6445 Stock Part 57308018	2.7 lbs.



SECTION B-B



SECTION A-A

DRAFT KEY SLOT REINFORCEMENT	WEIGHT
DWG. 4-K-8449 Stock Part 50092573	30.0 lbs.